

NIHÂVENT ŞARKI

Böyle tatlı gıldükçe

(♩ = 160)

ÜSûlî: Yürük Semâî

Müzik: Cihan DURA
Söz : Nilgün AYGÜL

Söz : Nilgün AYGÜL

(... Soz.

A single staff of music in treble clef with a key signature of one flat (B-flat). The melody consists of three measures: the first measure has a quarter note G4 and a half note F4; the second measure has a quarter note E4, a quarter note D4, a quarter note C4, and a quarter note B3; the third measure has a quarter note A3 and a half note G3.

First staff of music, treble clef, key signature of one flat (B-flat), 2/4 time signature. The melody consists of eighth and sixteenth notes, with a repeat sign and first/second endings.

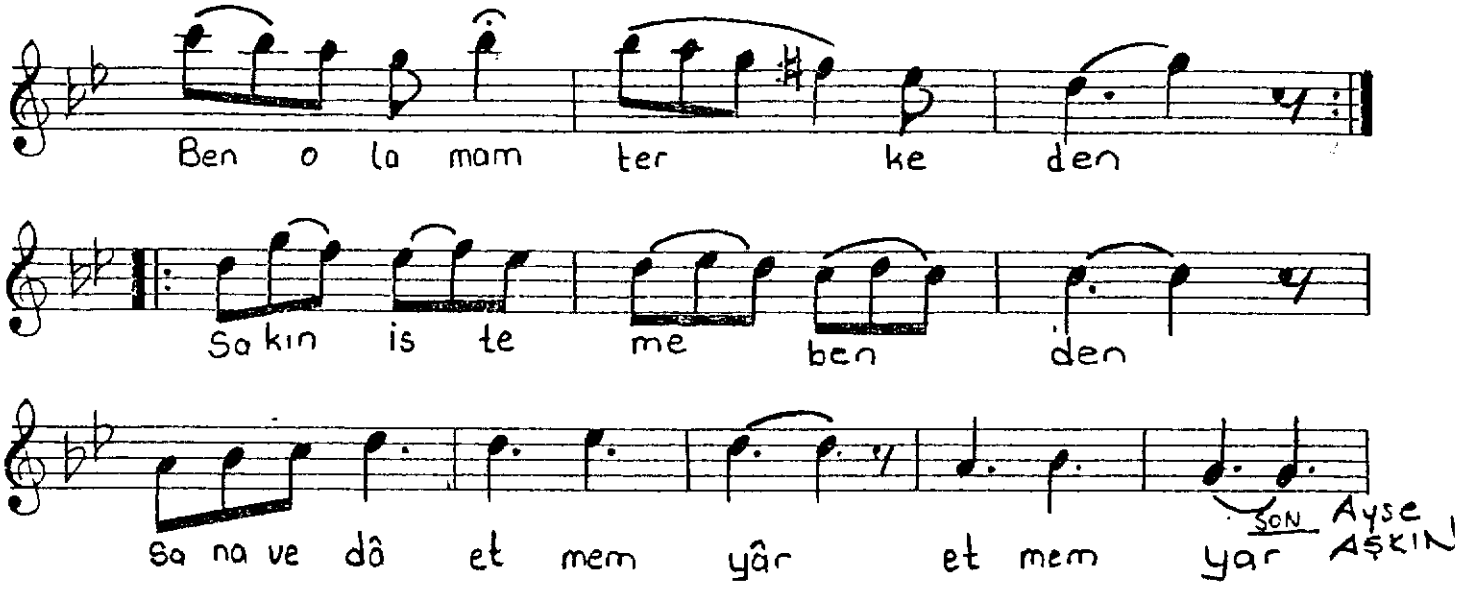
[illegible][illegible][illegible]

Handwritten musical notation for the first staff of 'Bâş'a'. The staff is in treble clef with a key signature of one flat (B-flat). It begins with a first ending bracket (1) over a series of eighth notes: B-flat, A, G, F, E, D, C, B. This is followed by a second ending bracket (2) over a series of eighth notes: B, A, G, F, E, D, C, B. The piece concludes with a double bar line and a final B-flat note. The tempo marking 'D.C. (BÂŞ'A)' is written below the staff.

So na ve dô et mem yâr et mem yâr

The first staff of handwritten musical notation is written on a five-line staff with a treble clef and one flat (B-flat). It contains six measures of music. The notes are: G4 (quarter), A4 (quarter), B4 (quarter), C#5 (quarter), D5 (half), and E5 (half). Above the notes are the lyrics "So na ve dô et mem yâr et mem yâr". Below the staff are the lyrics "Bı kar san bu sev gi den". There are some additional markings above the staff, including a colon after the first measure and a sharp sign before the second measure.

Bı kar san bu sev gi den



BÖYLE TATLI GÜLDÜKÇE

Böyle tatlı güldükçe
Bana ümit verdikçe
Ömür boyu sürdükçe
Sana vedâ etmem yâr

Bıkarsan bu sevgiden
Ben olamam terkeden
Sakın isteme benden
Sana vedâ etmem yâr.